



NOTICE TO MARINERS

No 66/18

FIRTH OF CLYDE – ARDROSSAN - RELOCATION OF HARBOUR TRAFFIC LIGHTS

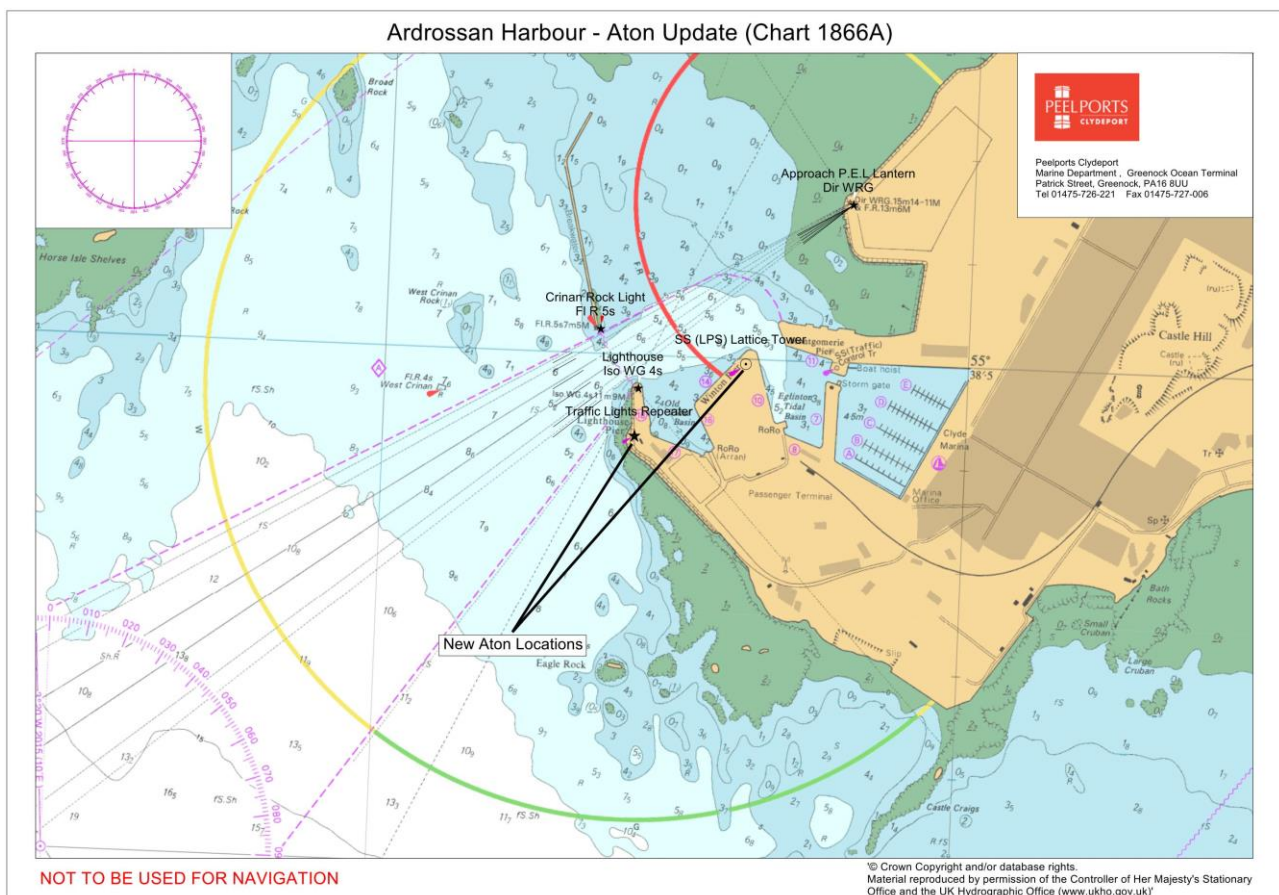
Charts 1888A & 2491

Mariners are advised that the Ardrossan Harbour Traffic Lights on top of the Ardrossan Port Control Tower are now extinguished and no longer in service and that the replacement Traffic Lights have been relocated to the following positions:

New Ardrossan Lattice tower 55°38.495N 004°49.382W

Repeat Lights on Breakwater 55°38.421N 004°49.568W

See chartlet below for a pictorial Reference:



The sequence and meanings of the Traffic Lights remain unchanged:

Brian Forrest, Senior Manager Marine Operations
Peel Ports Clydeport, Marine Department,
Greenock Ocean Terminal, Patrick Street, GREENOCK, PA16 8UU
Tel: 01475 726221 Fax: 01475 727006
Email: clydemarinemanagers@peelports.com

NTM: 66/18
Page: 1 of 2
Valid from: 13th July 2018
Expiry Date: 31st December 2018



Lights	Meaning	Comments
RED RED RED	Harbour and Marina closed to ALL traffic	No traffic is permitted to move within the outer basin, canting area or approach channel.
GREEN GREEN GREEN	Marina Open (Harbour Closed)	<p>Leisure vessels may proceed to and from Marina. Arriving and departing vessels should clear the outer basin, canting area and approach channel in an expeditious manner. An engine, if fitted, should be used to minimise such transit time.</p> <p><u>If the lights change,</u></p> <p>Any vessel not clear of Eglington tidal basin when the traffic control lights are changed should remain in position or return to the Marina. Ardrossan Radio (VHF Ch 12) will provide information to assist.</p> <p>Any vessel on approach to the Marina and not having passed the West Crinan buoy may wait, after receipt of information from Ardrossan Radio.</p> <p>Arriving vessels past the West Crinan buoy should contact Ardrossan Radio for information to assist them determine if it is safe to proceed.</p> <p>Commercial vessels should not enter, leave or manoeuvre within the harbour without prior contact with and appropriate information from Ardrossan Radio</p>
RED RED GREEN	Harbour Open (Marina Closed)	<p>Leisure vessels must keep clear of the outer basin, canting area and approach channel</p> <p>Commercial vessels may proceed at Master's discretion after receipt of information from Ardrossan Radio</p>

Ardrossan Harbour provides a Limited Local Port Service (LPS) and operates whilst timetabled Ardrossan Commercial Ferry services operate.

Leisure vessels are reminded that the Approaches to Ardrossan Harbour is a designated Narrow Channel. Vessels navigating within the channel limits in the approaches to Ardrossan Harbour should be considered to be in Narrow Channels within the meaning of Rule 9 of the International Regulations for Preventing Collisions at SEA (1972). In particular, vessels of less than 20 metres in length or a sailing vessel or a vessel engaged in fishing, or a vessel crossing the channel, shall not impede the passage of a vessel which can safely navigate only within a narrow channel or fairway. Commercial Ferries entering or leaving the harbour fall within this definition and should not be impeded in their entry or exit to the harbour.

Ardrossan Radio may be contacted on VHF 16/12 during Ardrossan Timetabled Commercial Ferry operations.

Estuary Radio may be contacted on VHF 12 or on ☎ 0151 949 6651.